



Support Handbook

This document is intended to guide members on the services provided by Merseyside Scouts and how to access support. Further information on specialist areas of support can be found within the relevant section of the County website.

Published: 28th March 2022

Latest version available via www.merseysidescouts.com

merseysidescouts.com
#SkillsForLife



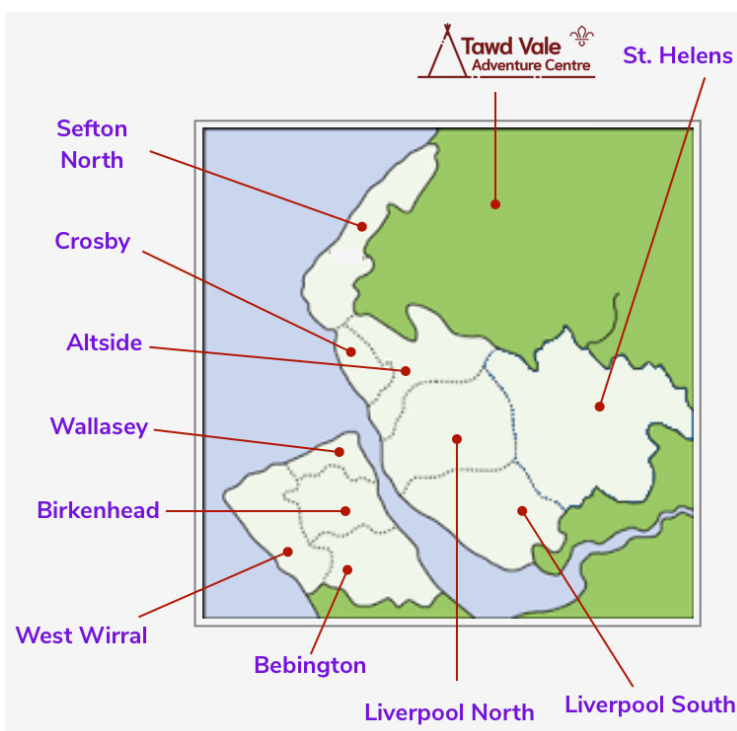
About Merseyside Scouts

Merseyside Scouts has over 10,000 members, across 145 Scout Groups and 10 Districts, located in the North West of England; which covers the Local Authorities of Knowsley, Liverpool, Sefton, St. Helens and Wirral.

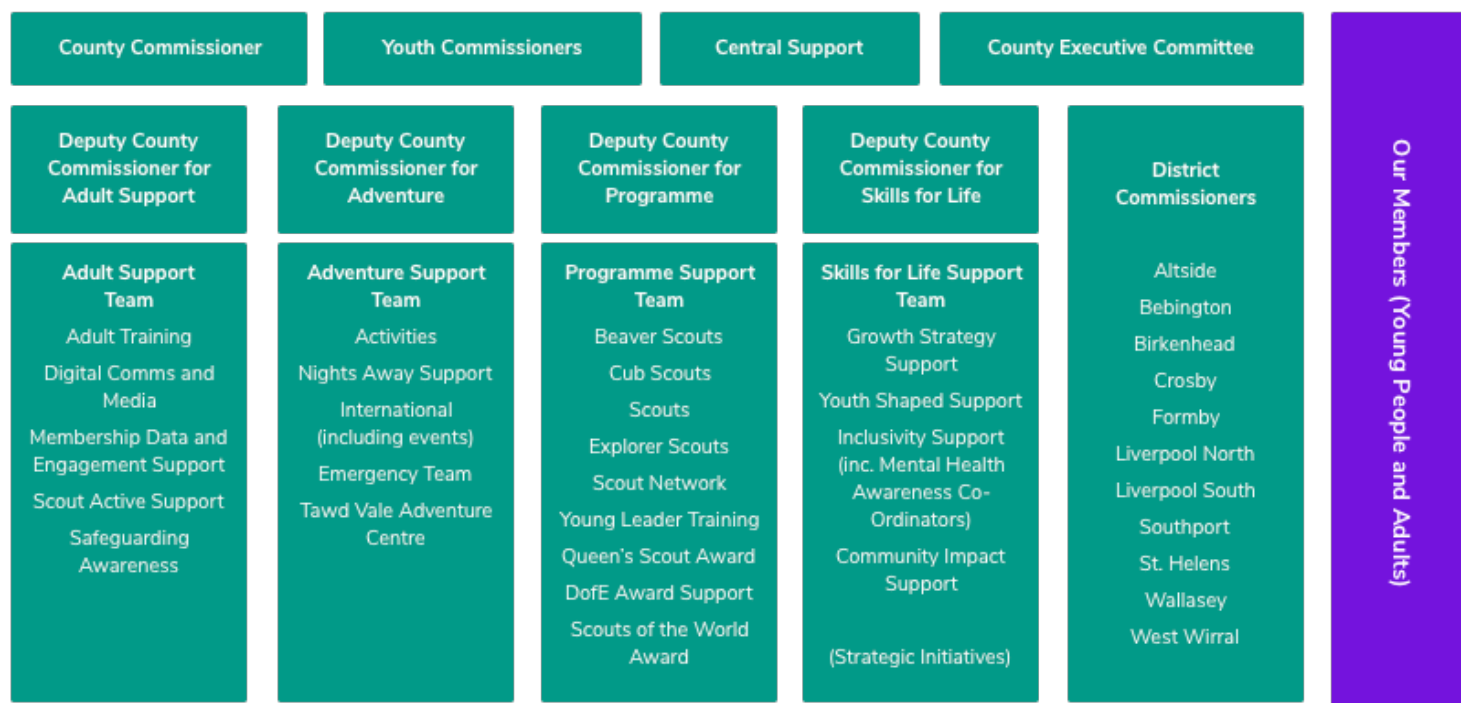
Our programme is supported by Tawd Vale Adventure Centre.

Across Merseyside, there is...

- 8000+ Young People
- 2000+ Regular Volunteers
- 2000+ Occasional Helpers
- 508 Sections and Units, led by Section and Unit Leadership Teams
- 145 Scout Groups, led by Group Scout Leaders
- 10 Districts, led by District Commissioners
- Tawd Vale Adventure Centre Customers



How we're structured to support our members...



County Leadership

The County Leadership manage the support that is provided to our 145 Scout Groups and 11 Districts across Merseyside Scouts. In addition, the County Commissioner has overall responsibility for the management of provision across Merseyside, working closely with District Commissioners and Group Scout Leaders. The County Youth Commissioner is our lead youth representative and leads our engagement with young people.

County Commissioner

Peter Oliver (Until Sunday 15th May 2022)

✉: Peter.Oliver@merseysidescouts.com

Chris Valentine-Burrows (From Monday 16th May 2022)

✉: Chris.Valentine-Burrows@merseysidescouts.com

County Youth Commissioners

Alex Clark

✉: Alex.Clark@merseysidescouts.com

Kieran Murphy

✉: Kieran.Murphy@merseysidescouts.com

Deputy County Commissioners

Adult Support: Daragh O'Malley

✉: Daragh.OMalley@merseysidescouts.com

Adventure: John Cadman

✉: John.Cadman@merseysidescouts.com

Programme: Nikki Parr

✉: Nikki.Parr@merseysidescouts.com

Skills for Life: Michael Hussey

✉: Michael.Hussey@merseysidescouts.com

Contact Us

County Office

Spaces 301
Tea Factory
82 Wood Street
Liverpool
L1 4DQ

Telephone: 0151 707 2671

Email: office@merseysidescouts.com

Web: www.merseysidescouts.com

Opening Hours: Monday to Friday, 10.00 to 16.00

Social Media

Facebook: www.facebook.com/merseysidescouts

Twitter: www.twitter.com/merseysidescout

Instagram: www.instagram.com/merseysidescouts

YouTube: www.youtube.com/merseysidescouts

merseysidescouts.com

#SkillsForLife

County Executive

The County Executive Committee supports the County Commissioner in the management of provision across Merseyside in line with our Policy, Organisation and Rules. It also provides governance over the Merseyside County Scout Council charitable entity, as well as the assets of the charity.

County Chair

David Steer Esq QC DL : David.Steer@merseysidescouts.com

County Secretary

James Barber : James.Barber@merseysidescouts.com

County Treasurer

Sam Robinson : Sam.Robinson@merseysidescouts.com

Elected and Nominated Members

Elected:

Mark Bennett (Chair of Risk)
Jane Owen
John Drysdale (Chair of Finance)
Nigel MacLeod
Alan Seeley (Chair of Appointments & Awards)

Nominated:

Daragh O'Malley
John Cadman
Michael Hussey
Nikki Parr

Nominated Youth Representatives

Calum Towers

Ex-Officio Members

Peter Oliver, County Commissioner
Alex Clark, County Youth Commissioner
Kieran Murphy, County Youth Commissioner

Tawd Vale Steering Group Chair

Andrew Pickersgill : Andrew.Pickersgill@merseysidescouts.com

Representatives to The Council of The Scout Association

Ex-Officio:

Peter Oliver
Alex Clark
Kieran Murphy

Nominated Representatives:

Michael Hussey
Daragh O'Malley

Nominated Youth Representatives:

Lucy James

District Leadership

District Commissioners lead Scouting in their District, on behalf of Merseyside Scouts and are responsible for appointing and supporting Group Scout Leaders and District Explorer Scout Commissioners. District Commissioners also build a team of Assistant District Commissioners and District Scouters to support them in their responsibilities.

Altside District Commissioner

Paul Clare

✉: Paul.Clare@merseysidescouts.com

Bebington District Commissioner

Chris Gerrard

✉: Chris.Gerrard@merseysidescouts.com

Birkenhead District Commissioner

Matt Jones

✉: Matt.Jones@merseysidescouts.com

Crosby District Commissioner

Rob Gorst

✉: Rob.Gorst@merseysidescouts.com

Liverpool North District Commissioner

Helen Hannigan

✉: Helen.Hannigan@merseysidescouts.com

Liverpool South District Commissioner

Ben Elman

✉: Ben.Elman@merseysidescouts.com

Sefton North District Commissioner

Sid Ludlow

✉: Sid.Ludlow@merseysidescouts.com

St. Helens District Commissioner

Chris Valentine

✉: Chris.Valentine@merseysidescouts.com

Wallasey District Commissioner

Jamie Fanning

✉: Jamie.Fanning@merseysidescouts.com

West Wirral District Commissioner

Phill Richardson

✉: Phill.Richardson@merseysidescouts.com

Adult Support

Adult Training

Responsible for managing learning and skills development. They provide formal and informal training directly to adult volunteers across all of our Groups and Districts; as well as those volunteering at County-level. Local Training Managers are the primary point of contact within a District or specialist area (e.g. Tawd Vale, Merseyside Emergency Team and Managers & Supporters) for enquiries relating to Adult Training.

County Training Managers

Leaner Management	Brenda Hope	✉: Brenda.Hope@merseysidescouts.com
Learning Management	Vacant	✉: -

Local Training Managers:

Altside	Colin Malkin	✉: Colin.Malkin@merseysidescouts.com
Bebington	Hazel Woodward	✉: Hazel.Woodward@merseysidescouts.com
Birkenhead	Lizzie Bridglock	✉: Lizzie.Bridglock@merseysidescouts.com
Crosby	Mike Carr	✉: Mike.Carr@merseysidescouts.com
Liverpool North	Steve Parry	✉: Steve.Parry@merseysidescouts.com
Liverpool South	Ben Elman	✉: Ben.Elman@merseysidescouts.com
Sefton North	Heather Skelland	✉: Heather.Skelland@merseysidescouts.com
St. Helens	Annette Peers	✉: Annette.Peers@merseysidescouts.com
Wallasey	Laura Pringle	✉: Laura.Pringle@merseysidescouts.com
West Wirral	Graham Barley	✉: Graham.Barley@merseysidescouts.com
Tawd Vale and MET	Mandy McCarthy	✉: Mandy.McCarthy@merseysidescouts.com
Manager & Supporters	Vacant	✉: -

Membership Data and Engagement Support

Responsible for ensuring the best use of the data we have available to us to support the engagement of our members.

Manager	Matt Donnelly	✉: Matt.Donnelly@merseysidescouts.com
---------	---------------	---------------------------------------

Digital Communications and Media

Responsible for digital communications, internally and externally, include managing our channels and campaigns.

Digital Engagement Manager	John Pouton	✉: John.Pouton@merseysidescouts.com
----------------------------	-------------	-------------------------------------

Scout Active Support Units

Responsible for managing Scout Active Support Units that operate at County-level and for supporting those that operate at District-level.

SASU Manager	Vacant	✉: -
--------------	--------	------

Safeguarding Awareness

Responsible for managing the delivery of Safeguarding Training across the County; including building a team of accredited Safeguarding Trainers. Support for the management of specific Safeguarding cases is normally provided within our 'line management' structure and by The Scout Association, in accordance with Policy, Organisation and Rules; and our Yellow Card.

Co-ordinator	Vacant	✉: -
--------------	--------	------

merseysidescouts.com

#SkillsForLife

Adventure

Activities

Responsible for supporting the development of Adventurous Activities across the County. Specifically, the management of the Activity Permit Scheme, training and support for activities, the management of activity provision at Tawd Vale and supporting Districts in the management of the Nights Away Permit Scheme.

Assistant County Commissioner	Vacant	✉: -
Manager, Activity Permit Scheme	Alex Sharp	✉: Alex.Sharp@merseysidescouts.com
County Assessors:	Ian Bell	✉: Ian.Bell@merseysidescouts.com
	Ian Butler	✉: Ian.Butler@merseysidescouts.com
	Alex Carroll	✉: Alex.Carroll@merseysidescouts.com
	Mel Connell	✉: Mel.Connell@merseysidescouts.com
	Richard Cross	✉: Richard.Cross@merseysidescouts.com
	Jennifer Dodd	✉: Jennifer.Dodd@merseysidescouts.com
	Jamie Fanning	✉: Jamie.Fanning@merseysidescouts.com
	Kevin Day	✉: Kevin.Day@merseysidescouts.com
	Paul Harris	✉: Paul.Harris@merseysidescouts.com
	Paul Clare	✉: Paul.Clare@merseysidescouts.com
	Roy Smith	✉: Roy.Smith@merseysidescouts.com
	Ray Hardman	✉: Ray.Hardman@merseysidescouts.com

Refer to www.merseysidescouts.com/activities for specialist advice, and information on our Activity Permit application process.

International

Responsible for supporting the development of International opportunities, engagements and Section programme support. Directly responsible for managing County-led International expeditions and experiences such as World Scout Jamborees, Explorer Belt Expeditions and specific opportunities.

Assistant County Commissioner	Alistair Cubbin	✉: Alistair.Cubbin@merseysidescouts.com
Support Team	Frances Greaney	✉: Frances.Greaney@merseysidescouts.com
	Brian McKee	✉: Brian.McKee@merseysidescouts.com
	Tish McKee	✉: Tish.McKee@merseysidescouts.com
	Pamela Tompsett	✉: <u>Pamela.Tompsett@merseysidescouts.com</u>

25th World Scout Jamboree Unit Leadership Team

Vicky Kelly	✉: Vicky.Kelly@merseysidescouts.com
Debbie Peers	✉: Debbie.Peers@merseysidescouts.com
Jack Roberts	✉: Jack.Roberts@merseysidescouts.com
Sarah Pye	✉: Sarah.Pye@merseysidescouts.com

Tawd Vale Adventure Centre

Responsible for managing the operations and development of Tawd Vale as a centre of adventure for the County.

Assistant County Commissioner	Chas Hawkins	✉: Chas.Hawkins@merseysidescouts.com
Duty Wardens	Ian Bench	✉: Ian.Bench@merseysidescouts.com
	Laura Bench	✉: Laura.Bench@merseysidescouts.com
	Lesley Easthope	✉: Lesley.Easthope@merseysidescouts.com
	Helen Lubbe	✉: Helen.Lubbe@merseysidescouts.com
	Craig McKee	✉: Craig.McKee@merseysidescouts.com
	Julie Moss	✉: Julie.Moss@merseysidescouts.com
	Ken Smith	✉: Ken.Smith@merseysidescouts.com
	Jennifer Turner	✉: Jennifer.Turner@merseysidescouts.com
	Neil Parr	✉: Neil.Parr@merseysidescouts.com
	Andrew Hughes	✉: Andrew.Hughes@merseysidescouts.com

Tawd Vale is supported by a team of Scout Active Support Members.

Emergency Team

Responsible for providing first aid support to internal and external events, and for supporting the development of our culture of safety. Available to support District and Group events, as available of the team allows.

Assistant County Commissioner	Les Shaw	✉: Les.Shaw@merseysidescouts.com	
Members	Kev Brown	Mandy McCarthy	Ricky Brennan
	Angela Pender	Anthony Nield	Rob Bousfield
	Clive Shaw	Simon Anders	Paul Hanley
	Joe Barnes	Stephen Bousfield	David Law
	Lee Harris	Viv Rathbone	

Programme

Our Programme Team lead the support that the County provides to our Sections and Units across our 146 Scout Groups and 11 Districts to deliver a full programme that allows our young people to develop skills for life and achieve Top Awards. They support those responsible for supporting the programme within Districts. They also determine and manage the implementation of County-level events to support our sections to deliver the programme. Our Programme Team lead on the County-level recognition of young people who have achieved Top Awards, including external awards. Our specialist support for the Duke of Edinburgh Award is available to provide advice and also to organise the delivery of the scheme across the County.

Squirrels

County Advisor	Matt Coles	✉: Matt.Coles@merseysidescouts.com
----------------	------------	------------------------------------

Beaver Scouts

Assistant County Commissioner	Jane Leadbetter	✉: Jane.Leadbetter@merseysidescouts.com
-------------------------------	-----------------	---

Cub Scouts

Assistant County Commissioner	Kate Barwise	✉: Kate.Barwise@merseysidescouts.com
-------------------------------	--------------	--------------------------------------

Scouts

Assistant County Commissioner	Gary Allwood	✉: Gary.Allwood@merseysidescouts.com
-------------------------------	--------------	--------------------------------------

Explorer Scouts

Assistant County Commissioner	Vacant	✉: -
-------------------------------	--------	------

Scout Network

Assistant County Commissioner	Matt Fitzpatrick	✉: Matt.Fitzpatrick@merseysidescouts.com
-------------------------------	------------------	--

Programme Achievement

Assistant County Commissioner	Lee Allwood	✉: Lee.Allwood@merseysidescouts.com
-------------------------------	-------------	-------------------------------------

Young Leader Training

Manager	Iain Parr	✉: Iain.Parr@merseysidescouts.com
---------	-----------	-----------------------------------

Queen's Scout Award

Co-Ordinator	Lee Allwood	✉: Lee.Allwood@merseysidescouts.com
--------------	-------------	-------------------------------------

Duke of Edinburgh's Award

Co-Ordinators	Dave Price	✉: Dave.Price@merseysidescouts.com
	Sue Taylor	✉: Sue.Taylor@merseysidescouts.com

Skills For Life

Our Skills For Life Working Groups lead specific projects in support of growth, youth shaped, inclusivity and community impact. The Growth Project Working Group is specifically constituted within the County Executive Committee as the Group that provides governance to the investment made by the County and external funders, in support of opening new Sections and strengthening Sections.

Growth Project Working Group

Chair	Michael Hussey	✉: Michael.Hussey@merseysidescouts.com
Growth & Development Officer	Jo Green	✉: Jo.Green@scouts.org.uk
Growth & Development Manager	Della Jackson	✉: Dellamarie.Jackson@scouts.org.uk

Members of this Working Group vary depending on the projects that are active at the time.

Mental Health Awareness Co-Ordinators

County Adviser	Jess Makin	✉: Jess.Makin@merseysidescouts.com
----------------	------------	------------------------------------

Central Support

County Administrators

Responsible for providing administrative support to the Leadership Team, the Officers of the County Executive Committee and wider Leadership and Support Team members, in the delivery of support. Also available to answer County-specific questions from Members, which cannot be answered by The Scout Association's Information Centre.

Annette Peers ☎: 0151 707 2671 ✉: Annette.Peers@merseysidescouts.com
Helen Barlow ☎: 0151 707 2671 ✉: Helen.Barlow@merseysidescouts.com

The County Office is open Monday to Friday between 10.00 and 16.00.

Digital Services Manager

Responsible for managing and developing the infrastructure used by the County for the delivery of digital services.

Calum Towers ✉: Calum.Towers @merseysidescouts.com

Safety Advisor

Responsible for advising on safety.

Matt Jones ✉: Matt.Jones @merseysidescouts.com

County Appointments Secretary

Responsible for supporting the County's Appointments and Awards Committee in their duties relating to County-level appointments.

Annette Peers ✉: Annette.Peers@merseysidescouts.com

Data Protection Officer

Responsible for defining and managing the County's data protection policies and compliance with General Data Protection Regulations.

Alan Seeley ✉: Alan.Seeley @merseysidescouts.com